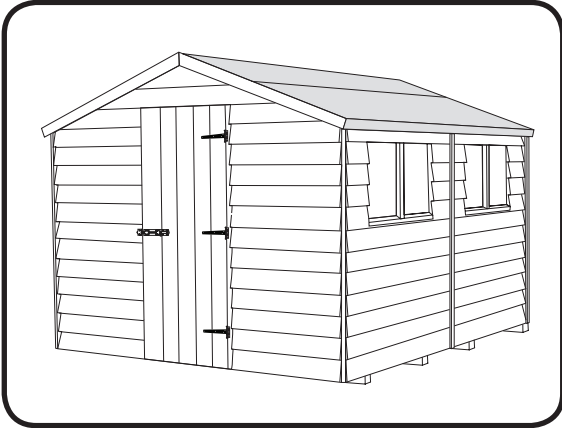


SUPER APEX & SUPER PENT

nominal size		cladding style			optional extras		floor size/inches
imperial	metric	featheredge	shiplap	loglap	on-site build fee	bearers with dpc	(minimum base)
4x3	1.22x0.91	£371	£441	£574	£99	£18	49.5 x 35.5
5x4	1.52x1.22	£384	£496	£637	£99	£33	61.5 x 47
6x4	1.83x1.22	£404	£500	£642	£99	£33	73.5 x 47
6x5	1.83x1.52	£469	£560	£714	£99	£41	73.5 x 59
6x6	1.83x1.83	£524	£636	£830	£99	£49	73.5 x 70.75
7x4	2.13x1.22	£469	£560	£714	£99	£41	84.5 x 47
7x5	2.13x1.52	£512	£619	£819	£99	£51	84.5 x 59
7x6	2.13x1.83	£553	£672	£909	£99	£61	84.5 x 70.75
8x4	2.44x1.22	£517	£636	£798	£99	£41	96.5 x 47
8x5	2.44x1.52	£553	£672	£875	£99	£51	96.5 x 59
8x6	2.44x1.83	£588	£728	£931	£99	£61	96.5 x 70.75
8x7	2.44x2.13	£672	£818	£1,008	£109	£71	96.5 x 82
8x8	2.44x2.44	£693	£846	£1,050	£112	£82	96.5 x 94
9x6	2.74x1.83	£714	£832	£1,070	£116	£73	108.5 x 70.75
9x8	2.74x2.44	£833	£1,014	£1,239	£135	£98	108.5 x 94
10x5	3.05x1.52	£685	£833	£1,042	£111	£61	120.5 x 59
10x6	3.05x1.83	£756	£917	£1,121	£122	£73	120.5 x 70.75
10x7	3.05x2.13	£819	£994	£1,218	£133	£86	120.5 x 82
10x8	3.05x2.44	£826	£1,008	£1,225	£134	£98	120.5 x 94
10x10	3.05x3.05	£1,057	£1,274	£1,540	£171	£122	120.5 x 118
11x8	3.35x2.44	£1,002	£1,218	£1,532	£162	£114	132.5 x 94
12x6	3.66x1.83	£881	£1,078	£1,309	£143	£86	144.5 x 70.75
12x7	3.66x2.13	£951	£1,162	£1,414	£154	£100	144.5 x 82
12x8	3.66x2.44	£1,024	£1,190	£1,575	£166	£114	144.5 x 94
12x9	3.66x2.74	£1,082	£1,548	£1,863	£175	£129	144.5 x 106
12x10	3.66x3.05	£1,366	£1,652	£1,982	£221	£143	144.5 x 118
13x8	3.96x2.44	£1,261	£1,527	£1,841	£204	£131	155.5 x 94
14x6	4.27x1.83	£1,142	£1,385	£1,688	£185	£98	166.5 x 70.75
14x8	4.27x2.44	£1,337	£1,610	£1,946	£217	£131	166.5 x 94
14x9	4.27x2.74	£1,442	£1,744	£2,093	£234	£147	166.5 x 106
14x10	4.27x3.05	£1,554	£1,877	£2,240	£252	£163	166.5 x 118
15x8	4.57x2.44	£1,442	£1,744	£2,101	£234	£147	178.5 x 94
15x10	4.57x3.05	£1,680	£2,031	£2,408	£272	£184	178.5 x 118
16x8	4.88x2.44	£1,520	£1,841	£2,206	£246	£147	190.5 x 94
16x10	4.88x3.05	£1,778	£2,135	£2,535	£288	£184	190.5 x 118
16x12	4.88x3.66	£2,072	£2,493	£2,961	£335	£220	190.5 x 142
18x8	5.49x2.44	£1,799	£2,170	£2,597	£291	£163	215.5 x 94
18x10	5.49x3.05	£2,058	£2,486	£2,940	£333	£204	215.5 x 118
18x12	5.49x3.66	£2,325	£2,793	£3,290	£376	£245	215.5 x 142
20x8	6.10x2.44	£1,960	£2,374	£2,829	£317	£180	237.5 x 94
20x10	6.10x3.05	£2,240	£2,702	£3,192	£363	£224	237.5 x 118
20x12	6.10x3.66	£2,549	£3,058	£3,584	£413	£269	237.5 x 142
22x10	6.71x3.05	£2,450	£2,954	£3,472	£397	£245	262.5 x 118
22x12	6.71x3.66	£2,758	£3,319	£3,879	£447	£294	262.5 x 142
24x10	7.32x3.05	£2,681	£3,221	£3,781	£434	£265	286.5 x 118
24x12	7.32x3.66	£3,016	£3,619	£4,208	£488	£318	286.5 x 142
24x14	7.32x4.27	£3,367	£4,032	£4,655	£545	£371	286.5 x 164



These Bespoke Super Sheds are our flagship with a wide range that gives you a host of variations to ensure you maximise whatever space and access you have.

All sheds are custom made to your specification, you can have the door and windows wherever you wish. We have a host of optional extras: including extra height, heavy duty framing, various roof covering options, lining and insulation, partitions and various joinery door and window options.

The windows options are only limited by the size of the building, and all doors are hung on the right unless specified by the customer.

This range of sheds are top of the range build quality and design, offering you strength, versatility and peace of mind in any form of building.

BUILD SPECS



ridge height = 2.08m (6'10")

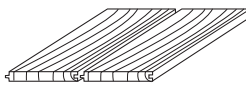
eaves height = 1.83m (6'0")



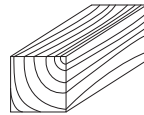
610mmx458mm window
(2'0" x 1'6")



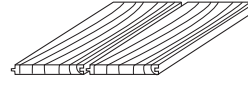
1800mmx735mm door
(5'11" x 2'5")



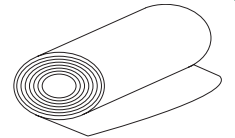
T&G timber floor



38mmx38mm frame
(1½" x 1½")



T&G timber roof



standard felt

MODELS



model ag *



model al †

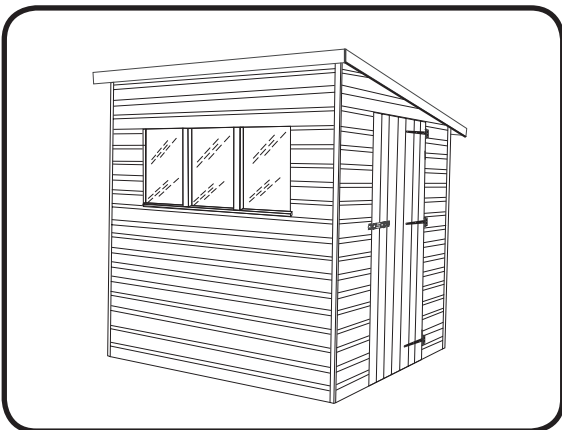


model ah *



model ar

* extra height may be required with these variants
† double doors are priced as optional extras



Pent sheds are built to the same high specifications as our super apex models.

The monopitch allows for a greater variety of customisation and is ideal in more restricted areas where drainage to one side is required.



ridge height = 2.08m (6'10")

eaves height = 1.83m (6'0")

MODELS



model pe



model pa



model pd



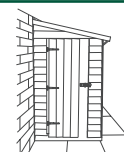
model pf



model pc



model pb



lean-to